



A Smart Car DVR Camera for utmost Driving Assistance



# Smart Mobile DVR



# ➤ MDVR8102SP-AI | With Built-in ADAS & DMS camera







# MDVR8102SP-AI ADAS + DMS

4-CH 1080P AI ADAS Camera Built-in 4G GPS WIFI Mobile DVR

## Features

- 1080P 4G GPS WIFI Mobile DVR, Car DVR;
- H.265 compression code, adopt Nova Tek high performance processor;
- Built in 110° 1080P ADAS camera + 1080P 135° wide cabin view camera, support external 4 channels extendable
- Built in speaker to indicate device working status and instructions from server;
- Industrial grade design;
- Support to connect with equipment with mobile phone through WIFI;
- Support remote live view in real time;
- Support to set parameters via mobile phone;
- Support 2 TF cards, maximum 512GB;
- Support center management software such as CMSV6. Wialon or SDK integration with the third party software;
- Support iPad, iPhone, Android and PC to remote view in real time;
- TF card data security protection with special lock way;
- Excellent Heat dissipation design;
- Easy installation with 3M sticker on windshield.

ADAS



DMS





# MDVR8102SP-AI | Driver Fatigue Monitor System



Built-in DMS Cabin Camera  
135° View Angle

Other than the audio alarm, the DMS feature also indicate the trigger action on the recorded footage.



# MDVR8102SP-AI | Driver Fatigue Monitor System



**Driver Yawning**



**Driver Distraction**



**Driver Calling**



**Closing of Eyes**



**Camera is Covered**



**Driver Fatigue**



- When any of these scenarios is detected, the DMS will immediately activate.
- It will also send picture or video proof to the CMS Platform for fleet managers to evaluate.



# MDVR8102SP-AI | Added Feature



## Seat-belt Alarm

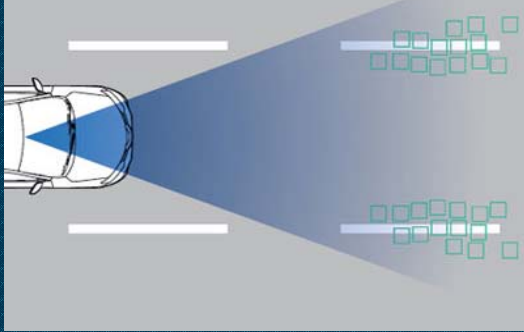
Another unique feature of this device is the seat-belt alarm. If the driver is not buckled up, this feature will trigger an audio alarm. As a result, the motorist will never forget to drive without wearing it.



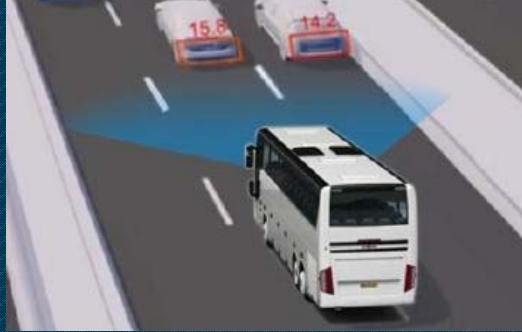


# MDVR8102SP-AI | Advanced Driver Assistance System

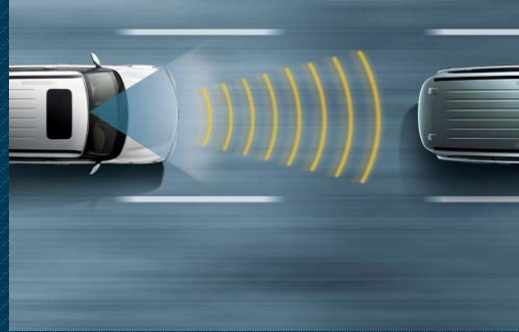
Lane Departure Warning



Headway Monitoring Warning



Front Collision Warning

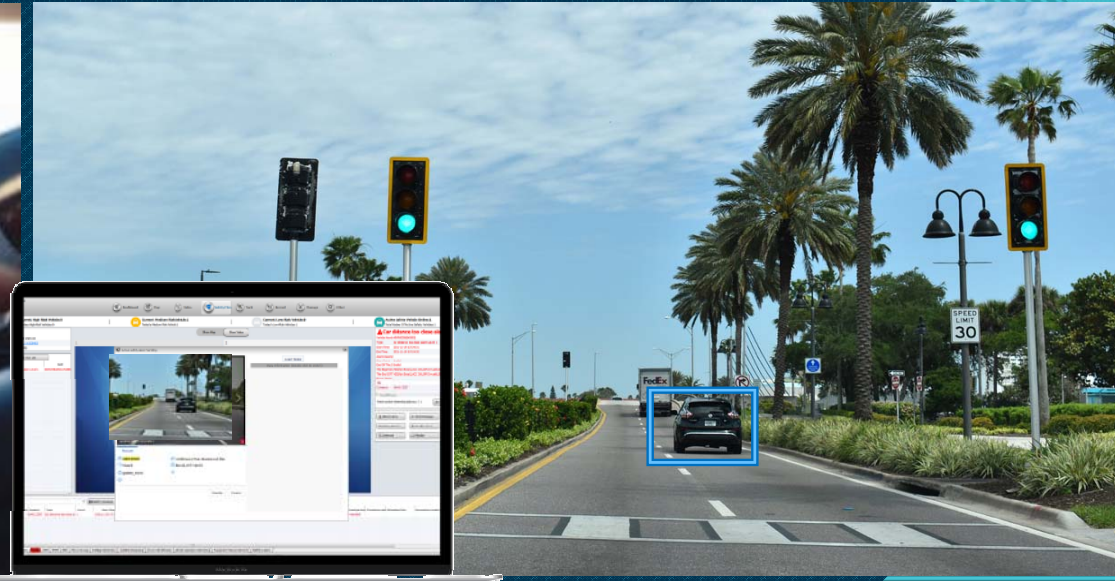


Pedestrian Crossing Warning



Drive safely with the ADAS built-in feature of the MDVR8102SP-AI

For instance, the FCW is triggered, the device will send a screen recorded file to the CMS Platform of the incident.





# ➤ MDVR8102SP-AI with ADAS & BSD





# MDVR8102SP-AI

## Blind Spot Detection System



BSD610



### Specifications

- 1080P AHD mini car side camera
- 1920\*1080 High resolution
- Left side, right side, top view, rear view
- 6mm lens
- 10pcs LED
- IP69 Water-proof & Vandal-proof housing
- As Bus Side-view HD camera
- As Car Rear & Side viewing HD Camera
- Different orientations installation

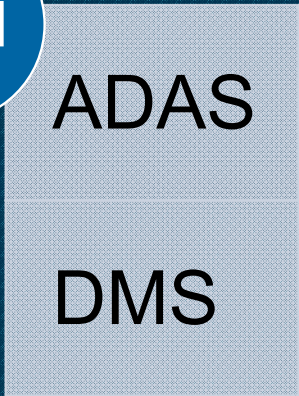


# MDVR8102SP-AI | AI Function

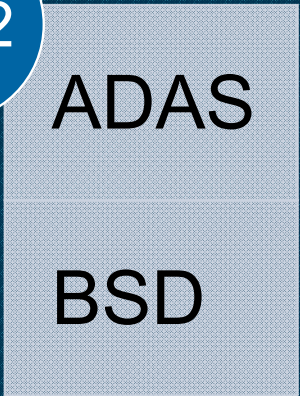
The MDVR8102SP-AI is powered by Artificial Intelligence. However, to provide better and accurate driving assistance, only 2 function can be active at the same time.



Opt1



Opt2



Opt3





# MDVR8102SP-AI | Technical Parameters



<b>Industrial Design+A11:C43</b>	Smart style, can adsorbed on windows glass of all kinds of vehicles.	
<b>Language</b>	Chinese,English or others(can be customized)	
<b>SOC</b>	Novatek 98323 dual core+NPU	
<b>Video</b>	Video input	2 channel 1080P video input (support external 2 channels extendable)
	Video compression	AHD H.265 compression
	Built in camera 1	1080P 110° ADAS camera
	Built in camera 2	1080P 135° cabin wide view camera (can be built-in DMS)
	External Camera	CH3 or CH4 can connect BSD or DMS Camera
	Optional OSD information(CVBS on Monitor or CMS client)	Time, channel name, company name, driver name, plate number, GPS position, speed, G-sensor Harsh Braking, Harsh Acceleration, Harsh Concerning, Over speed)...
Recording	Support CMS platform back-up, mobile phone local downloading/playback, History recording via MDVR player software.	
<b>GPS</b>	Built-in GPS module and antenna to make sure accurate position and time	
<b>4G</b>	Built-in 4G module and antenna, FDD-LTE/WCDMA,TD-LTE,FDD-CTLTE optional	
<b>WIFI</b>	Built-in WIFI module and antenna; AP mode in default, phone connect directly with device and can switch to WIFI mode after set well the parameters. Support WIFI downloading.	
<b>G-sensor</b>	automatically correcting and do not limit the installation direction of the equipment	
<b>Power</b>	Working mode	8-36V, lower consumption
	Standby mode	12V,10mA; When vehicle been crushed on standby mode, alarm information would be sent to manager's mobile phone and device would start recording in 10 seconds

<b>APP</b>	2-CH or 4ch channels video playback	
	industrial encrypted video format, convert into MP4 video format, convenient for sharing intercepted videos	
	Track playback	
<b>PC Client</b>	Android and IOS version	
	Support CMSV6, Wailon, and SDK/API integration with third party platform	
	2-CH or multi channels video playback	
<b>Indicators</b>	Track playback	
	Window version	
	GPS	Indicator falsh: seaching satellite; indicator on:successful positioning; indicator off: no working
	REC	Indicator on: recording; indicator off: not recording
	NET(4G)	Indicator on: 4G module working well; indicator flash: device connected to platform
	WIFI	Indicator on: AP mode connected; indicator flash: data comunication
	SOS	Works as a power indicator; device power on: orange light keep turning; device start recording: orange light on; press SOS button: orange light flash
<b>Speaker</b>	Clear sound quality	Support send broadcast text content remotely, intercom two-way
	Prompt content	WIFI connected; WIFI disconnected; start recording; stop recording
<b>Storage</b>	Two TF card slot, Support 2 max 512G TF cards each slot	
<b>Alarm</b>	Press SOS button, upload picture or video to server (optional)	



Dual Wide View Camera Default (2x1080P)	✓
H.265 High Efficient Compression	✓
SOS Panic Button Alarm	✓
Built-in GPS	✓
Built-in 4G for Remote Live Streaming/Downloading	✓
Built-in WIFI AP/Client Mode for Configuration & Automatic Upload	✓
Built-in G-sensor(Harsh Braking/Acceleration/Cornering/Collision Alarm)	✓
Automatic Alarm Video Uploading to Cloud Server	✓
Pre & Post Alarm Recording	✓
Internal Microphone & Speaker for Two Way Communication	✓
Built-in Super Capacitor UPS for Data Protection (4 Seconds after Shut Down)	✓
2*I/O Alarm Input	✓
1*I/O Alarm Output (5V)	✓
1*CVBS Output	✓
2* TF Card Slots	✓
1* SIM Card Slot	✓
TF & SIM Card Tamper-proof Lock	✓
Support CMSV6, Wailon, and SDK/API Integration with Third Party Platform	✓
CH1 ADAS Road Camera	✓
1080P Camera 3 Input Interface-DMS Camera or BSD Camera or others AHD Camera	✓
1080P Camera 4 Input Interface-DMS Camera or BSD Camera or others AHD Camera	✓
RS232 Interface for Fuel/Temperature/Oxygen Sensor RFID Reader...etc.	✓



With the latest H.265 HEVC technology, the Footages are clearer & it has 6mm ADAS Lens

## H.265 Video Encoding

Smoother Streaming Video and Better Quality  
Save date and storage up to 40%

Memory usage reduced by 40%



60%



100%




H.265    H.264

Video contrast effect

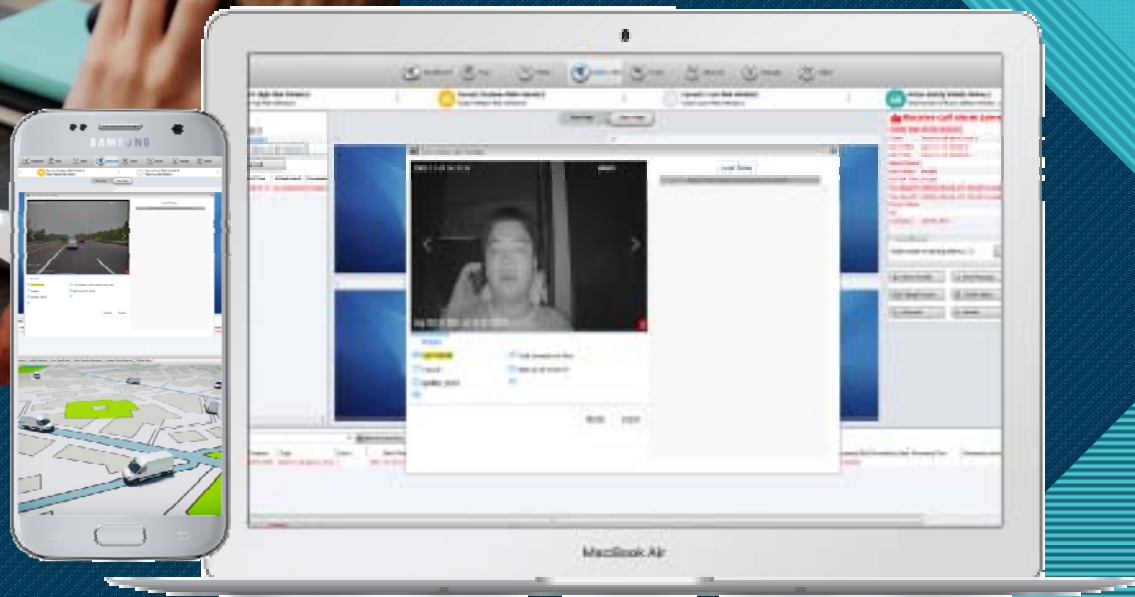






- Fleet managers can easily track and monitor their vehicles with incorporating the MDVR8102SP with our CMS Platform.
- Compatible with any mobile gadgets (Android, IOS, PCs & Laptops)

➤ Real-time monitoring and trip records can assist in employee evaluation; supervisors can also issue warnings to drivers who exhibit a pattern of poor driving behavior.







**➤ Vehicle Application**





# 17 Years of Experience

# QOHO

Provider of Smart AI Mobile DVR

# Thank you!

Our mission: To be the Guardian of your journey with highest cost-effective products and services.  
Our Culture: Customers First, Effective Communication and Trustworthy Partner



12/F,C area, HuiLongDa Industrial Park, Shiyan street,  
Baoan District, Shenzhen city, Guangdong province, China.



[sales@qohovisions.com](mailto:sales@qohovisions.com)



[www.qohovisions.com](http://www.qohovisions.com)